

## 4.9 Schlüter®-DILEX-BWA



### MOVEMENT JOINT PROFILE

FOR FLEXIBLE CONNECTIONS

### Application and Function

Schlüter®-DILEX-BWA is a movement profile used in tile installations to provide a flexible connection to the building's fixed elements. The perforated anchoring leg, made of recycled rigid PVC, is secured in the tile adhesive beneath the tiles. Epoxy resin, silicone, tile adhesive, etc. can be used to bond the dove-tailed channel of the profile (opposite the anchoring leg) to the existing structure.

The 5 mm wide movement zone, made of soft CPE, absorbs occurring movements. The lower soft zone is slit to maximise the absorption of tensile stresses. Schlüter®-DILEX-BWA prevents sound bridges, thereby reducing sound transmission.

### Material

Schlüter®-DILEX-BWA consists of a perforated anchoring leg made of recycled rigid PVC, connected by a soft CPE top and bottom section to a dove-tailed channel, also made of recycled rigid PVC.

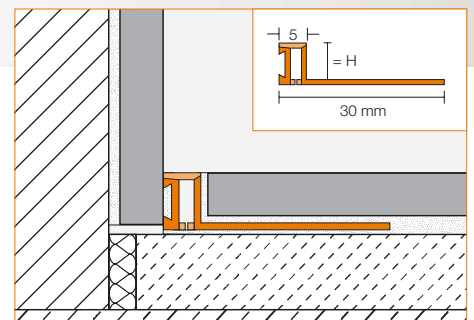
### Material Properties and Areas of Application:

The material is resistant to most chemicals commonly encountered in tiled environments.



In special cases, the suitability of a proposed type of material must be verified based on anticipated chemical, mechanical, and/or other stresses. The trim's CPE expansion zone is UV-resistant and free of softening agents.

Schlüter®-DILEX-BWA is used in tile installations as a flexible connection to fixed structural components. Applications include window or door frames, thresholds, cupboard-wall connections, floor coverings against existing wall or dado coverings, etc.





## Installation

1. Select Schlüter®-DILEX-BWA according to tile thickness.
2. Trowel the tile adhesive along the edge area where the profile is to be installed.
3. If required, fill the dove-tailed channel with epoxy resin, silicone, or similar to adhere the profile to the existing structure.
4. Press the perforated anchoring leg of the Schlüter®-DILEX-BWA into the tile adhesive and adjust it securely against the existing building elements.
5. Trowel additional adhesive over the perforated anchoring legs to ensure full coverage.
6. Solidly embed the tiles and align flush with the top of the profile.
7. A joint of approx. 2 mm - 3 mm should be left between the tile and the profile.
8. Fill the joint completely with grout.

## Maintenance

Schlüter®-DILEX-BWA is resistant to fungi and bacteria and requires no special maintenance. Clean the profile along with the tiled surface using common household cleaning agents.

### Text template for tenders:

Supply  
 \_\_\_\_\_ per metre Schlüter®-DILEX-BWA as  
 a movement profile with a trapezoid-perforated  
 anchoring leg made of recycled rigid PVC  
 connected by a soft CPE top 5 mm wide and  
 bottom section to a dove-tailed channel, also  
 made of recycled rigid PVC, to provide a flexible  
 connection to the building's fixed elements, and  
 install according to manufacturer's specifica-  
 tions.  
 Profile height  
 (according to tile thickness) \_\_\_\_\_ mm  
 Colour: \_\_\_\_\_  
 Art.-No.: \_\_\_\_\_  
 Material: \_\_\_\_\_/m  
 Labour: \_\_\_\_\_/m  
 Total: \_\_\_\_\_/m



## Product overview:

### Schlüter®-DILEX-BWA

Colours: G = grey, PG = pastel grey, BW = brilliant white, HB = light beige, GS = black

Length supplied: 2.50 m

Colours	G	PG	BW	HB	GS
H = 4.5 mm	•	•	•	•	•
H = 6 mm	•	•	•	•	•
H = 8 mm	•	•	•	•	•
H = 10 mm	•	•	•	•	•
H = 12.5 mm	•	•	•	•	•